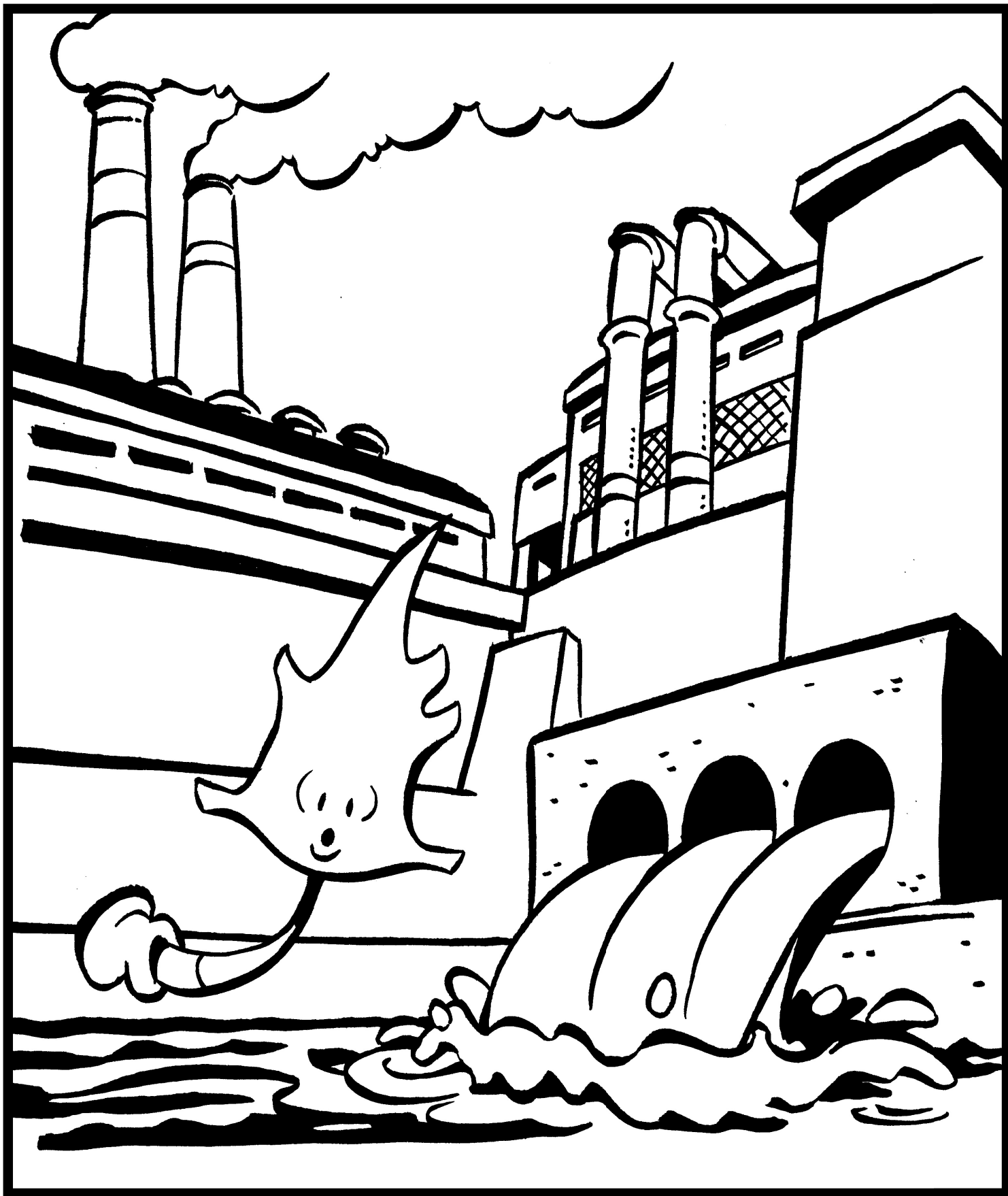


Rustle the Leaf • February 2007

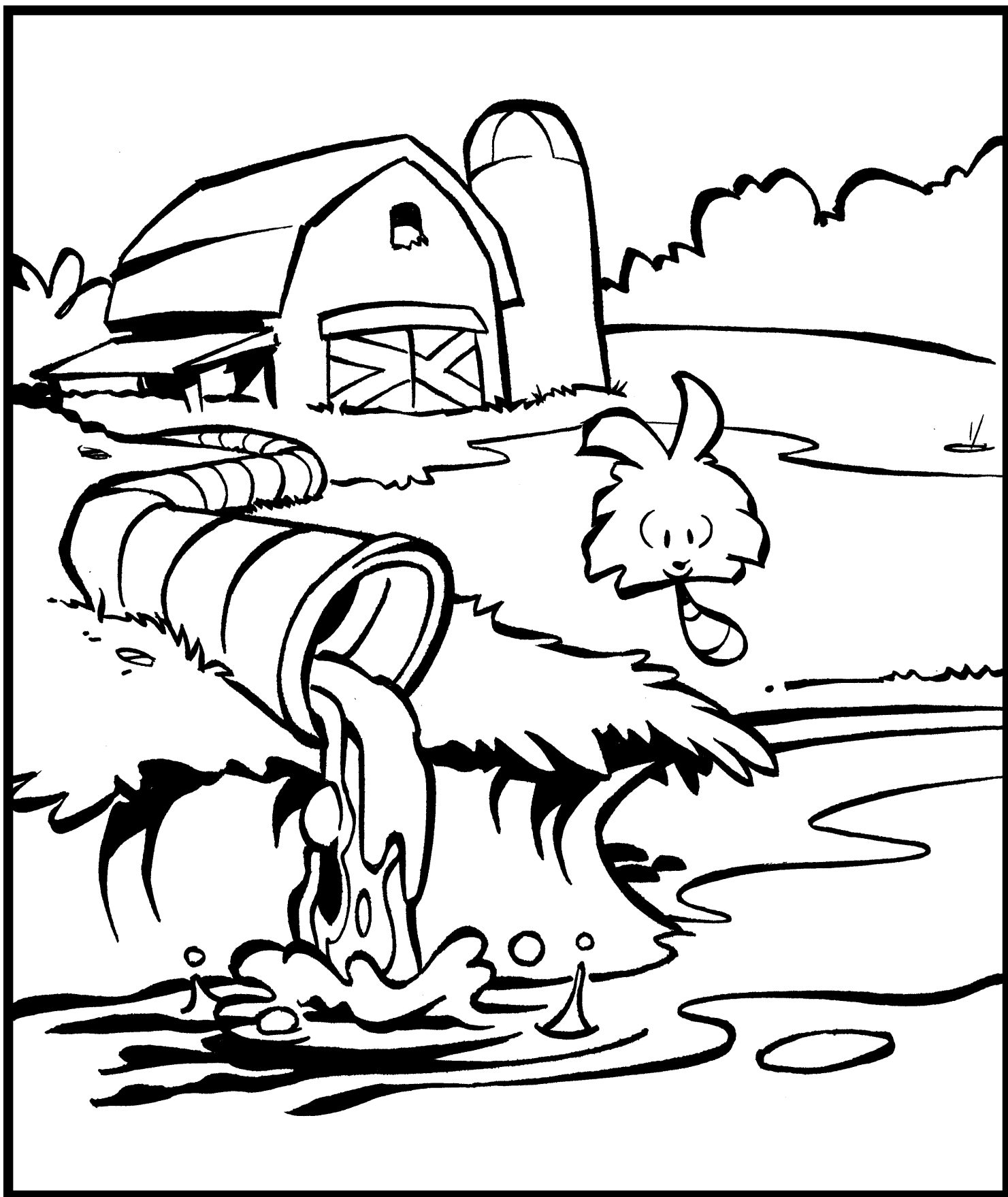
“Everyday Water Pollution”

Many of the products people use every day contain chemicals that find their way into our water supply. Color the following pages, and share them with family and friends to help remind everyone about how to avoid polluting our precious water supplies.

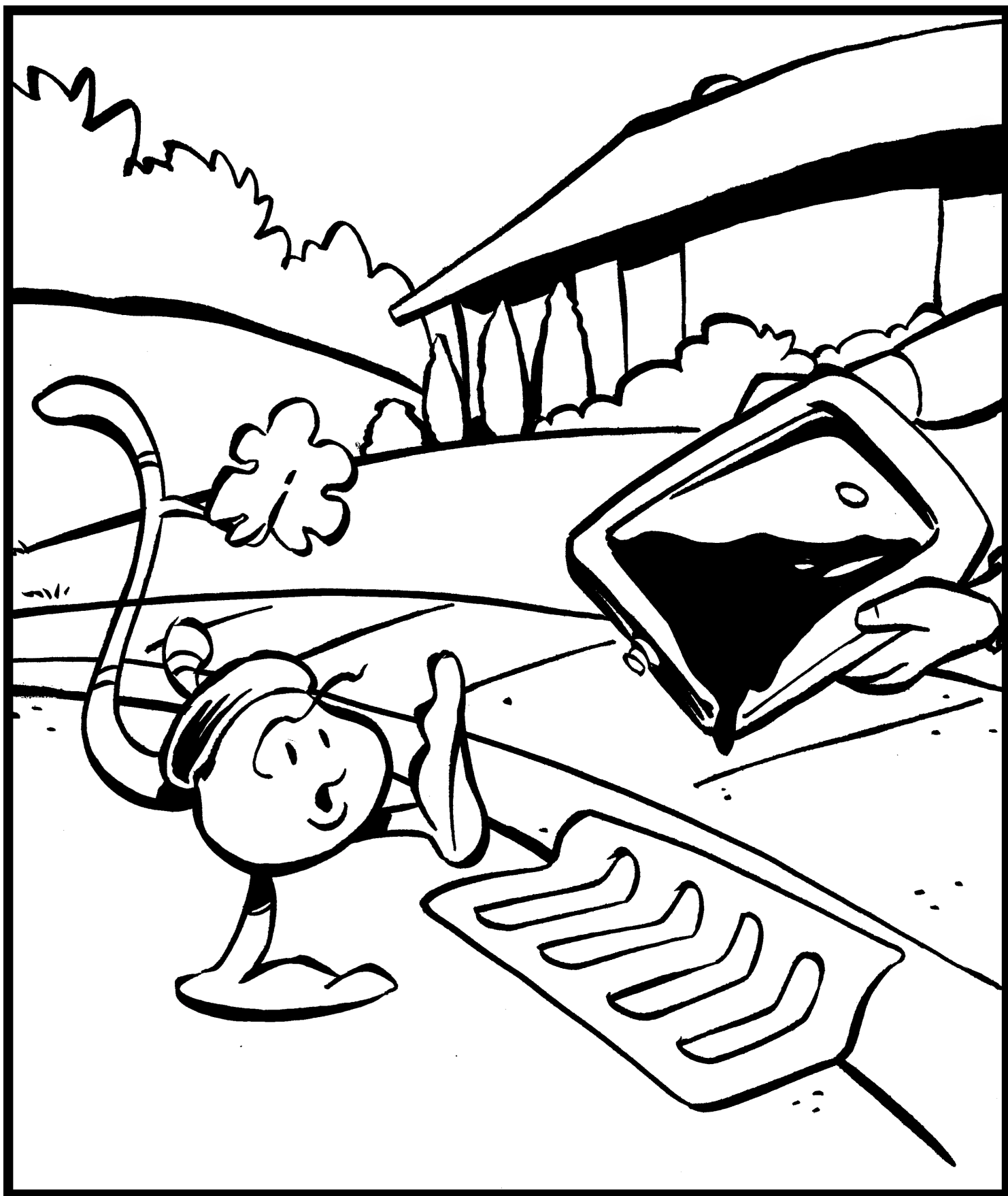




Even though laws have been passed to reduce water pollution from factories, many millions of gallons of water are still affected by chemical dumping.



Some farms use chemicals to fertilize land, to prevent insect damage, and to modify the diets of farm animals. These chemicals are carried by rainwater into our water supplies, or are dumped directly into lakes and streams.



Sometimes, people who change the oil in their cars or use paints and solvents to do projects in the garage dump their leftover chemicals into street drains.



We don't think about it very often, but many of the cleaners we have in our homes are filled with chlorine bleaches, petroleum-based chemicals and other things that should never be put down a drain.