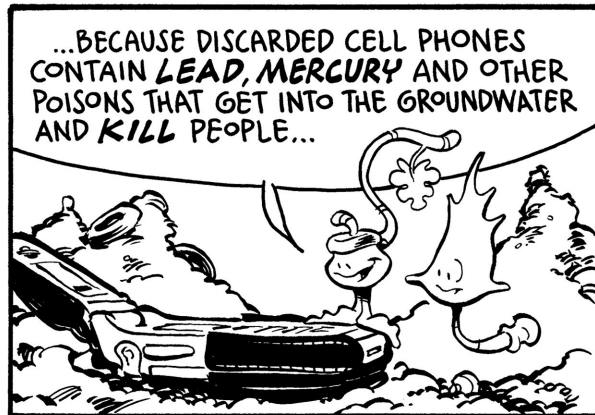
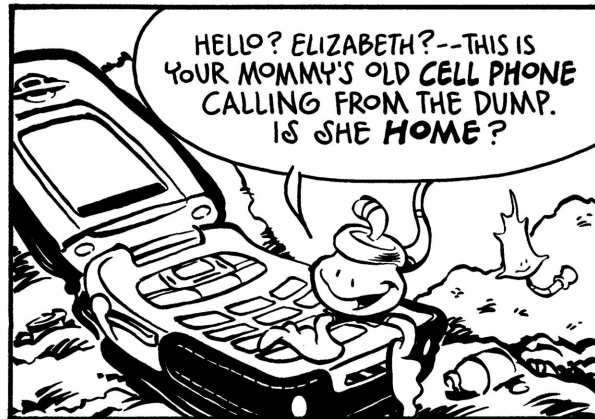


RUSTLE THE LEAF™

BY PONCÉ & WRIGHT



© 2006. GO NATU'R'L STUDIOS, LLC. RUSTLETHELEAF.COM

Find out more about technology pollution by visiting:

<http://www.cbsnews.com/stories/2004/12/06/tech/main659234.shtml>
<http://www.epa.gov/epaoswer/education/pdfs/life-cell.pdf>
<http://www.peopleandplanet.net/doc.php?id=2644>
<http://www.legis.state.wi.us/assembly/asm77/news/columns/Call%20Wasting.htm>
<http://news.com.com/2100-1040-844195.html>

<http://www.realmama.org/archives-fall-2005/recycling.php>
<http://www.bornfree.org.uk/coltan>
<http://www.npr.org/programs/re/archivesdate/2001/dec/20011220.coltan.html>
http://www.informinc.org/Calling_Cellphones_front.pdf
<http://www.wired.com/news/technology/1,65932-0.html>
<http://greenvilleonline.com/news/2003/11/22/2003112219611.htm>

NOTICE: The web sites listed here display content relating to this month's Rustle the Leaf comic strip. We make no claim of responsibility for content on these web sites. The opinions and content published on these sites does not necessarily reflect the opinions of GO NATU'R'L STUDIOS, LLC., or the creators and supporters of Rustle the Leaf.